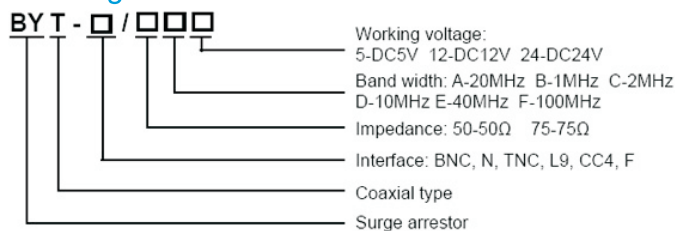


Introduction

BYT series coaxial signal SPD, which is suiting to the monitoring system of close-circuit TV, security system, satellite communication system and the computer net system of coaxial signal transmission. It is designed according to the features of the signal transmission system which is low signal amplitude, high transmission frequency, weak anti-interference ability and easily to be damaged by over voltage shocked by thunder and surge. Products have lots of coaxial interface, such as BNC, N, TNC, L9, CC4 and FI10.

Model and meaning



BYT-BNC

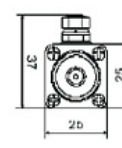
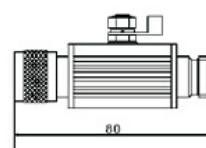
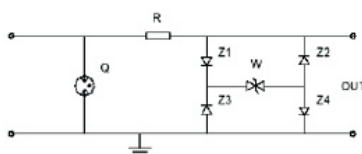
Technical Parameters :

Item	BYT-BNC/				BYT-N/		BYT-TNC/		BYT-L9/		BYT-CC4/		BYT-FL10	
	75D24	75E24	50D24	50E24	50D24	50E24	50D24	50E24	50D24	50E24	50D24	50E24	75D24	75E24
operating voltage Un	DC24V													
Maximum continuous operating voltage	DC30V													
Normal discharge current In	10kA (8/20 s)													
Interface form	BNC		BNC		N		TNC		L9		CC4		FL10	
Frequency range	10	40	40	40	40	40	10	40	10	40	10	40	10	40
Protective level	<120V													
Response time	≤10ns													
Insertion loss	≤0.1db													
Wave impedance	75		50										75	



BYT-N/50D24

Electric principal & Dimension



Product Features

1. Large thunder flow, 10kA, 8/20S
2. Little rest voltage and insertion loss.
3. Fast response time and convenient installation.

Installation Location and Application

1. Installed at BNC, N, TNC, L9, CC4 and FL10 interface between LPZOB and LPZ3.
2. Applied in close-circuit TV, monitoring system, guard system, and the computer net system of coaxial signal transmission, satellite communication system VSAT.